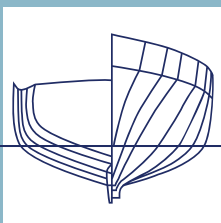


KROGEN  
YACHTS

AT HOME ON ANY SEA



Krogen 52





# The Philosophy



## WELCOME TO KROGEN YACHTS, WHERE YOU'RE AT HOME ON ANY SEA.

At Krogen Yachts, we build reliable, safe, and seaworthy yachts that allow our owners to experience the best of bluewater cruising on board a provide our customers a luxurious, trans-oceanic, bluewater capable trawler yacht.

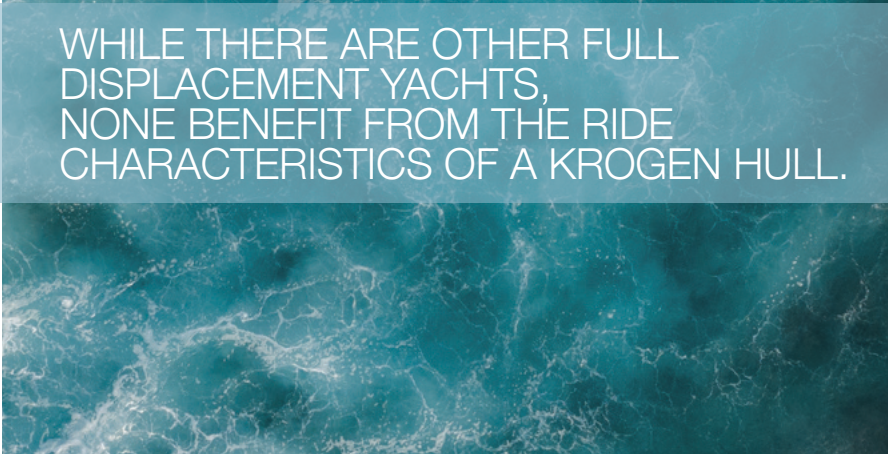
When you build with Krogen Yachts, you become part of a tradition for passagemaking excellence that dates back to 1976, when founders Art Kadey and Jim Krogen created a 42-footer that combined the proven seakeeping attributes of commercial ships with the onboard amenities and a level of livability fit for the recreational yachting market.

That first hull—with the onboard volume and seaworthiness to comfortably carry her owners across oceans—was the basis of our exclusive Pure Full Displacement hullform, that we still build on today.

Each of our models are designed around the same core philosophy, a Pure Full Displacement hull fitted out with an interior designed and built to exacting expectations.

We proudly offer customers a lineup of seven models ranging from 44 to 70 feet that allow our customers to live out their bluewater cruising dreams. Because one thing we've learned over our nearly 50 years of boatbuilding is that it's your adventures, your love of your boats, and the community that our customers have built that we're most proud of.

Let's go cruising.



WHILE THERE ARE OTHER FULL  
DISPLACEMENT YACHTS,  
NONE BENEFIT FROM THE RIDE  
CHARACTERISTICS OF A KROGEN HULL.

## About the Krogen 52

The Krogen 52 epitomizes the true essence of every Krogen Yacht built since 1976: an all-oceans-capable trawler with incredible liveaboard accommodations for a couple or family. This is combined with a level of craftsmanship and attention to detail that only a handful of boatbuilders achieve. The machinery and components we employ on the 52, and indeed every Krogen model, reflect our deep understanding that the open ocean is no place for inferior products. Highlights include John Deere engines, Northern Lights generators, ABT TRAC thrusters and stabilizers, optional fuel-polishing systems, and an American-made Cook gelcoat. All of these elements will ensure your Krogen 52 will take you the distance in safety—and unrivaled comfort.

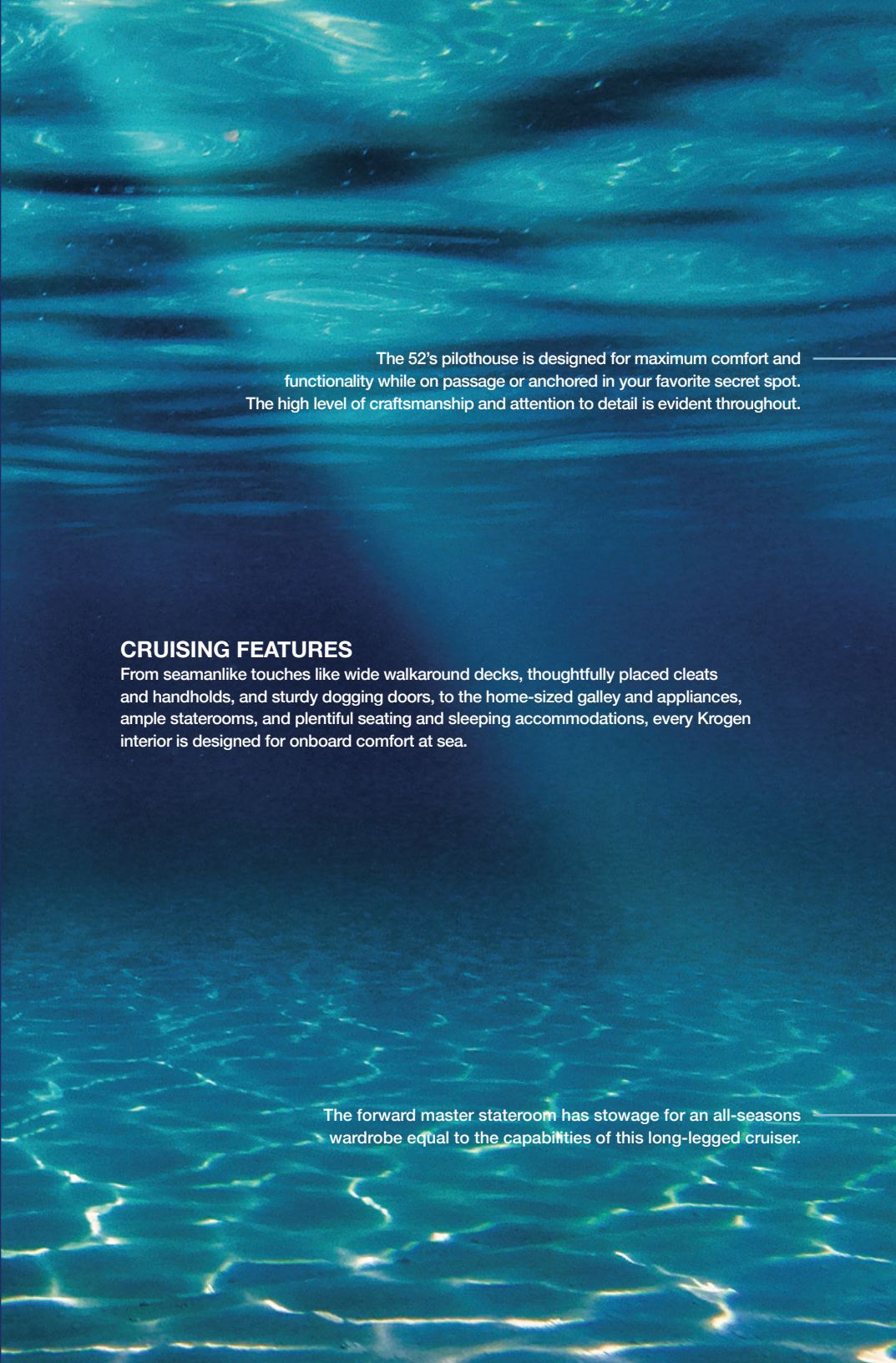
Krogen offers well-thought-out accommodations plans tailored to your cruising ambitions and family lifestyle. The flow from the covered aft deck into the saloon and galley area creates an incredible amount of usable space. One mandatory element on any liveaboard passagemaker is the creation of distinct social and lounging areas to allow the crew to spread out and be apart while on passage. While the aft deck provides a perfect area to dive into that growing stack of books, the pilothouse settee and table could be mistaken for another main salon area. Then one deck down you'll find the open office area, a trademark design feature going back to the original Krogen 42. On the Krogen 52, this area can also be converted into a third stateroom. The flybridge provides an additional social and relaxation area to spread out while heading over the horizon.

A sound bluewater cruiser such as the Krogen 52 is often a sum of its parts. It's not just one aspect or detail that makes a boat a truly successful all-ocean passagemaker, but every single element: such as mechanical systems layout, hull design, use of interior space, and construction. Krogen ensures that each and every model incorporates our nearly five decades of experience. Our project managers and in-house design and engineering staff will work with each customer to ensure their Krogen suits their specific needs, building upon the foundational elements already in place.

For example, the entire Krogen 52 is built from only three molded pieces for maximized structural integrity. The hull features six massive longitudinal stringers to deliver exceptional strength. There are no additional secondary bonds or caulk joints that could inevitably cause issues. All deck and superstructures are cored and vacuum-bagged to maximize strength while minimizing weight.



Wide side decks  
and well-placed hand-  
rails making moving  
fore and aft a breeze  
while underway.



The 52's pilothouse is designed for maximum comfort and functionality while on passage or anchored in your favorite secret spot. The high level of craftsmanship and attention to detail is evident throughout.

## CRUISING FEATURES

From seamanlike touches like wide walkaround decks, thoughtfully placed cleats and handholds, and sturdy dogging doors, to the home-sized galley and appliances, ample staterooms, and plentiful seating and sleeping accommodations, every Krogen interior is designed for onboard comfort at sea.

The forward master stateroom has stowage for an all-seasons wardrobe equal to the capabilities of this long-legged cruiser.






The galley is equipped properly for preparation of large meals, with the counter space to match, which makes it easy to keep a crew fed between watches. Note the side-door from the galley.



An office area makes it easy to keep business organized, whether it's just the business of running the ship, or running your shoreside business from a distant port.



One look at the Krogen 52's roomy salon and galley make it obvious that onboard comfort is a top priority. The salon features an inviting L-shaped settee (U-shape also an option) and an adjustable hi-lo table that transforms into a dining area with room for up to six people.



The flybridge is a terrific perch for friends and family to enjoy a long passage. The optional summer kitchen moves meal time outside to absorb your surroundings.

## EXTERIOR FEATURES

Every Krogen is designed to maximize the amount of dedicated living space, inside and out. The flybridge provides a functional and comfortable perch for passagemaking, docking, or finding the best spot to drop the hook in a secluded anchorage. The large cockpit features a walkthrough door to the swim platform, and there are ocean-ready cleats conveniently located for all docking needs. Large safety rails and wide walkaround decks add to the seamanlike capabilities and long-range-cruisability.

The perfect companion in a quiet anchorage? An easily launched tender. Just splash and explore!



With a summer kitchen, dual helm chairs, and plentiful seating for guests, the flybridge on the Krogen 52 is ideally suited for passagemaking and entertaining.



# The Krogen 52 Specifications

**LOA:** 57' 9" (17.60 M)

**LOD:** 52' 8" (16.05 M)

**BEAM:** 17' 4" (5.28 M)

**DRAFT W/STANDARD SINGLE ENGINE:** 5' 5" (1.65 M)

**DRAFT W/OPTIONAL TWIN ENGINES:** 4' 6" (1.37 M)

**DISPL.:** 70,000 LB. (31,752 KG)

**BALLAST (ENCAPSULATED LEAD):** 5,300 LBS. (2,404 KG)

**FUEL:** 1,400 GAL. (5,300 L)

**WATER:** 400 GAL. (1,515 L)

**APPROX. BRIDGE CLEARANCE**

**W/MAST UP:** 24' 8" (7.52 M)

**W/MAST DOWN:** 15' 9" (4.80 M)

**RANGE:**

6 KNOTS: 4,850 NAUTICAL MILES

7 KNOTS: 3,300 NAUTICAL MILES

8 KNOTS: 2,500 NAUTICAL MILES

9 KNOTS: 1,700 NAUTICAL MILES

\* Optional features and equipment may be shown on models throughout. Computer-generated images and rendered images used throughout are the designer's impression and are indicative of conceptual designs. The imagery used on may not represent actual design and construction or may be indicative of style only. Further the actual design / construction may vary from the one displayed in the information and material displayed throughout. Specifications subject to change without notice.



SCAN HERE TO SEE MORE ON THE KROGEN 52





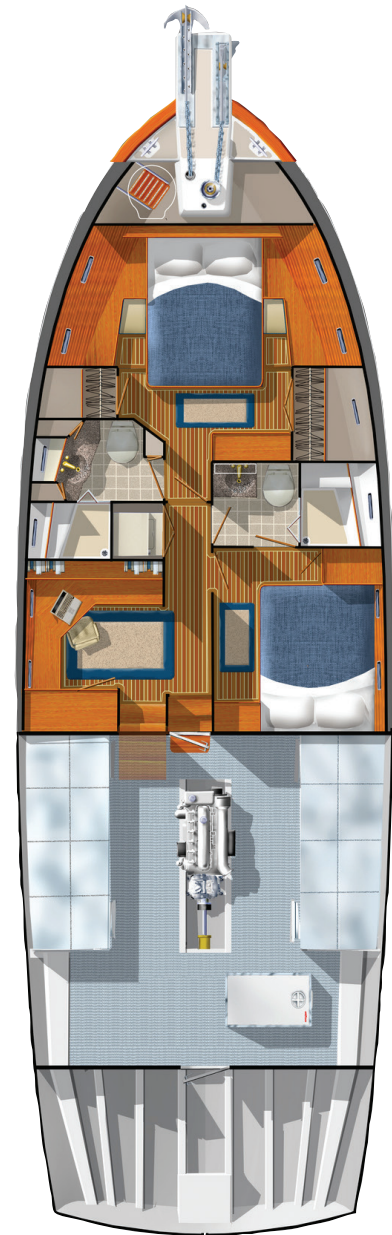
## BRIDGE DECK

The flybridge helm station is situated amidships for optimal comfort at sea and features a dual helm chairs and ample room for a tender.



## MAIN DECK

A spacious salon and extensive galley with professional-grade appliances back up a pilothouse that's ready for long offshore passages.



## LOWER DECK

A standard two-stateroom layout with office makes it easy to extend the cruise, and welcome family or guests aboard at stops along the way.

Every Krogen Yacht starts with the exclusive Pure Full Displacement hullform—a masterpiece design originally created by Jim. Krogen. This form has ideal displacement-to-length ratios, a fine entry, and characteristic end-to-end symmetry—and never compromises strength.



